
**KEI MUA I TE AROARO O TE RŌPŪ WHAKAMANA
I TE TIRITI O WAITANGI
BEFORE THE WAITANGI TRIBUNAL**

WAI 2750

IN THE MATTER OF **the Treaty of Waitangi Act 1975**

AND

IN THE MATTER OF **Kaupapa inquiry into claims concerning
Housing Policy and Services**

**EVIDENTIAL FACT SHEET
MAIHI KA ORA – NATIONAL MĀORI HOUSING STRATEGY
(TE TŪĀPAPA KURA KĀINGA –
MINISTRY OF HOUSING AND URBAN DEVELOPMENT)
10 Whiringa-ā-rangi | November 2021**

CROWN LAW

TE TARI TURE O TE KARAUNA

Pouaka Poutāpetā PO Box 2858
TE WHANGANUI-Ā-TARA WELLINGTON 6140
Waea Tel: 04 472 1719
Waea Whakaahua Fax: 04 473 3482

Whakapā mai: Contacts:

M Tukapua / H Graham
Matewai.Tukapua@crownlaw.govt.nz / Harry.Graham@crownlaw.govt.nz

Counsel Acting:


Rachael Schmidt-McCleave
rachael.schmidt-mccleave@kschambers.co.nz

RECEIVED

Waitangi Tribunal

11 Nov 2021

Ministry of Justice
WELLINGTON

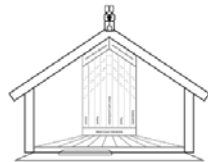
1.	Basic information	<p>Title of policy / programme: MAIHI Ka Ora – National Māori housing strategy</p> <p>Year introduced: 2021</p> <p>Still current?: Yes/No</p> <p>Administering agency(ies): Te Tūāpapa Kura Kāinga (HUD) lead agency supported by Te Puni Kōkiri, Kāinga Ora and agencies and departments across Government who are part of the MAIHI Framework for Action.</p> <p>High level summary of policy/programme: MAIHI Ka Ora – the National Māori Housing strategy provides the strategic direction to current and future policy, process and investment decisions that impact Māori Housing. It is also a symbol of partnership between Māori and the Crown, a document that sets a direction for Māori Housing using a Māori worldview and Māori concepts and a roadmap towards a better Māori Housing future Māori and the Crown follow together.</p> <p>Te Tūāpapa Kura Kāinga, in partnership with Te Puni Kōkiri led its development on behalf of the Crown partnering with Te Matapihi he tirohanga mō te Iwi Trust who led the engagement process for the strategy and co designed MAIHI Ka Ora with support from the National Iwi Chairs Forum, some hapū and iwi, and Te Maihi Whare Wānanga.</p> <p>The Strategy identifies the shared priority areas of both Māori and the Crown, clearly conveys the importance of establishing a genuine partnership between Māori and the Crown and proposes actions for the short to medium term required to address the priority areas addressed.</p> <p>It was important to Māori and the Crown that this strategy was not written as a tick box exercise, that it used language, concepts and ideas that came from both partners.</p> <p>The concept of the Whareniui is used to describe the Māori Housing journey.</p> 
----	--------------------------	--

Building a Genuine Partnership

The MAIHI Framework for Action was built on the work that He Whare Āhuru started, which created the space where an invitation to partner could be established. To ensure we can effectively address the long-standing problems in the Māori Housing sector – we must do so as genuine partners, Māori and the Crown. The Crown cannot achieve the necessary changes on their own and neither can Māori given the scale of the crisis; we must work together.

The whare in this image represents the place that the Crown and Māori will come together, but until now, both Māori and the Crown have spent their time on the marae ātea – the realm of support. Here is the place where we have been able to start to ready ourselves and start to enter and build into the whare.

The Māori Iwi Housing Innovation Framework for Action was built on the work that He Whare Āhuru started, which created the space where an invitation to partner could be established. To ensure we can effectively address the long-standing problems in the Māori Housing sector – we must do so as genuine partners, Māori and the Crown. The Crown cannot achieve the necessary changes on their own and neither can Māori given the scale of the crisis; we must work together.



Our Shared Priorities

Through wānanga we have designed and implemented MAIHI. This has readied the partners to start construction on the marae.

On the back wall of the whare are five pou, representing the five shared priority areas. The pou are grounded by a strong Māori Crown partnership and held together at the top by MAIHI Whare Wānanga.

The poutama panels that sit behind the pou represent our whānau, and how they will transition through the housing continuum. Whānau hold this prominent place in the whare as a constant reminder to keep whānau at the centre of all we do to build a better housing future.



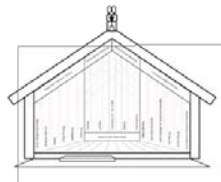
Building into the Whare

The Māori collective is made up of iwi, hapū, whānau, National Iwi Chairs Forum, Te Matapihi, marae, whenua Māori and providers.

The Crown collective is made up of the different government departments and agencies that are connected through MAIHI and must work as one.

The delivery of the strategy, like the stability of the house, depends on both sides standing tall, sharing the weight of responsibility and remaining grounded and committed to providing a better housing future for all Māori and Aotearoa.

Like the walls of a whare the partnership must be balanced and even.



MAIHI Ka Ora

The roof is what completes the whare. It creates the apex of the house and connects Māori and the Crown to each other. It galvanises the strength of both sides of the whare and represents the balance that has been created through partnership.

The panels or the heke represent the shared actions we will take together to address the priorities (on the back wall of the whare). Each step brings us all closer to the front of the whare and to achieving our share vision – All whānau have safe, healthy affordable homes with secure tenure, across the Māori housing continuum.

MAIHI Ka Ora has a shared vision that “All whānau have safe, healthy, affordable homes with secure tenure, across the Māori housing continuum.”.

The Strategy is a commitment to that vision, but at its core it is also a long term commitment to a strong and genuine partnership between Māori and the Crown to deliver that vision together.

Overlapping/Related policies/programmes:

The strategy advances the direction of He Whare Āhuru He Oranga Tangata. He Whare Āhuru was reviewed before the development of the strategy, and to ensure continuity, original members of He Āhuru Whare He Oranga Tāngata advisory group was involved in the development of MAIHI Ka Ora.

The strategy takes Te Maihi o te Whare Māori – Māori and Iwi Housing Innovation Framework for Action (MAIHI) which drives a whole of system approach and elevates it to provide the strategic direction for the whole Māori housing system. At the heart of the focus for Māori housing aspiration is the desire to start with a strengths-based approach through the principles of MAIHI and ‘Te Mauri o te Whānau’ at the centre of everything we do. MAIHI Ka Ora is underpinned by the six principles of MAIHI- Framework for Action (articulated as the circle (spiral) pictorial) – Manaakitanga, Tikanga, Whakamana, Mauri, Tino Rangatiranga and Whanaungatanga to support Te Mauri o Te Whānau intergenerational prosperity and well-being.

MAIHI Ka Ora was developed and released at the same time as the Government Policy Statement on Housing and Urban Development (GPS-HUD) to give impetus to both strategies to deliver system change.

MAIHI Ka Ora was also informed by the Aotearoa Homelessness Action Plan (HAP), the WAI 2750 Kaupapa Inquiry into Housing Policy and Services (Wai 2750) and the National Policy Statement on Urban Development and Public Housing Plan.

Agencies involved in development, implementation, or ongoing administration:

Crown collective: Te Tūāpapa Kura Kāinga is the lead agency in partnership with Te Puni Kōkiri and with the support of: Te Arawhiti, Kāinga Ora, DIA, MSD, Treasury and MBIE.

Māori collective: The collective comprises iwi, hapū, whānau, the National Iwi Chairs Forum, Te Matapihi, marae, Māori providers, a reference group comprising of the original members of He Āhuru Whare He Oranga Tāngata advisory group, and Te Maihi Whare Wānanga.

2.	Description of Policy / Programme	<p>Structure</p> <p>The MAIHI Ka Ora Strategy has maintained 3 workstreams (aligned with MAIHI Framework for Action 3 work streams):</p> <ol style="list-style-type: none"> 1. Respond 2. Review 3. Reset <p>Under these 3 workstreams MAIHI Ka Ora will focus on these six priority areas:</p> <ol style="list-style-type: none"> 1. Māori Crown Partnerships 2. Māori-led Local Solutions 3. Māori Housing Supply 4. Māori Housing Support 5. Māori Housing System 6. Māori Housing Sustainability <p>Delivery</p> <p>The Crown collective involved in the MAIHI Ka Ora work programme will strengthen the cross-government approach to provide a ‘single door’ pathway to housing for the Māori collective that was initiated through MAIHI Framework for Action.</p> <p>The Māori collective involved in MAIHI Ka Ora provided significant input during engagement which is directly reflected in the priorities of the strategy. The ongoing involvement of the Māori collective in implementing MAIHI Ka Ora will be outlined in Phase Two.</p>
3.	Outline of the process to develop this Policy / Programme	<p>Development</p> <p>MAIHI Ka Ora has two phases:</p> <ol style="list-style-type: none"> 1. Establishing Strategic Direction: Phase one involved setting out priority areas, goals and an overview of the areas of work that will be undertaken in the second phase of development. This phase was completed and released in September 2021. 2. Development of a detailed implementation plan. Phase two is the development and release of the Implementation Plan for MAIHI Ka Ora is in development, to be released in the first half of 2022. <p>Policy background</p> <ul style="list-style-type: none"> • Refer He Whare Āhuru EFS • Refer MAIHI -Framework for Action EFS <p>MAIHI Ka Ora has built on the work of the above two significant pieces of work to set the strategic direction for Māori housing. Steps to develop MAIHI Ka Ora:</p>

Engagement process with Māori

He Whare Āhuru. The engagement process included consultation with Iwi, Māori communities, Māori land trusts, Māori housing providers, financial institutions, central government, Māori social service providers, and Māori education providers. A list of individuals, groups and organisations that assisted with the development of He Whare Āhuru can be found in the EFS.i

MAIHI- Framework for Action: In early 2019 the then Associate Minister of Housing and Urban Development (Māori Housing), Hon Nanaia Mahuta, began work with Te Kāhui Kāinga Ora to frame up an active response for Māori Housing. At their annual engagement with the Crown at Waitangi in 2019, the National Iwi Chairs Forum had indicated that they would build 1,000 homes (under the kaupapa they coined as ‘Iwibuild’). Te Tūāpapa Kura Kāinga, with Te Puni Kōkiri and the then Housing New Zealand, brought teams together to work through identifying the range of services and products on offer and identify potential gaps. This informed a series of ‘Chew Sessions’ and workshops with the Minister, Iwi and Māori, and officials. The discussions and advice evolved to MAIHI, which was established on the basis of the strategic direction and Māori housing sector knowledge in He Whare Āhuru. Internal advice was commissioned by Minister Mahuta, following which Te Tūāpapa Kura Kāinga organised a workshop facilitated by the ThinkPlace design company in October 2019, with key stakeholders selected for their breadth of experience across the Māori housing sector. This critical workshop was called to devise a framework for attending to the housing needs and aspirations of Māori which became known as MAIHI. Attendees are listed in the MAIHI EFS.

The MAIHI-Framework for Action was an invitation to Māori and the Crown to engage on the pathway (ara) to enter the whare. From the development of MAIHI late 2019 to early 2020, both parties have walked the ara. In May 2020, Cabinet agreed to establish Te Maihi Whare Wānanga as an approach to share the responsibility for driving change. Te Maihi Whare Wānanga is a Ministerial Forum with Māori led by the Associate Minister for Housing (Māori Housing). The Crown has worked in partnership with Te Matapihi to develop Te Maihi Whare Wānanga tikanga and progressed a shared vision for a forum to achieve consensus through sharing dialogue, listening and learning together in a safe environment. The first Maihi Whare Wānanga took place in Pōneke at Te Wharewaka on 16 December 2020 and was attended by all four Housing Ministers, Iwi representatives, Te Matapihi, and Māori community housing experts and service providers, as well as Crown officials. Feedback from the Whare Wānanga has been positive from Ministers and with both the Iwi Chairs Forum and Te Matapihi giving a strong endorsement for MAIHI.

MAIHI Ka Ora was then co-designed with Māori and continues to be developed with the Māori collective of the MAIHI Whare Wānanga. Officials from Te Tūāpapa Kura Kāinga ,Te Puni Kōkiri and a representative from Te Matapihi ran six regional wānanga across the motu from 21 – 26 June 2021 and held two online on 28 June and 2 July 2021. The regions where engagement took place were: Kerikeri, Auckland, Hastings, Wellington, Christchurch (held online due to COVID-19 concerns at the time) and Gisborne.

		<p>There were between 10 and 20 attendees from iwi and Māori organisations and housing providers at each hui (except Christchurch which was changed to online last minutes so had less). Engagement was also undertaken with members of the National Iwi Chairs Forum, Crown agencies and a reference group comprising of the original members of He Whare Āhuru He Oranga Tāngata advisory group during the week 28 June – 2 July. At the July 2021 MAIHI Whare Wānanga a final summary of the engagement feedback was presented to Māori and the Crown, and the priorities of the new strategy were discussed.</p>
4.	Aims or Objectives of the Policy / Programme	<p>MAIHI Ka Ora aims to achieve six ultimate goals – one for each of the priority areas.</p> <p>Priority 1: Māori Crown Partnerships Ultimate goal: To work in partnership where the Crown and Māori achieve balance through a collaborative work programme that strengthens housing solutions for whānau.</p> <p>Priority 2: Māori-led Local Solutions Ultimate goal: There is a significant increase in the number of quality, locally-led Māori housing solutions.</p> <p>Priority 3: Māori Housing Supply Ultimate goal: The number of Māori owned homes, iwi and hapū owned houses can meet the housing needs of all Māori.</p> <p>Priority 4: Māori Housing Support Ultimate goal: Whānau have better access to effective support that is fit for purpose and enables them to attain and maintain their preferred housing option.</p> <p>Priority 5: Māori Housing System Ultimate goal: The system supports Māori to accelerate Māori-led housing solutions.</p> <p>Priority 6: Māori Housing Sustainability Ultimate goal: Whānau are supported to achieve mana-enhancing housing solutions on their whenua. Māori are able to sustain a connection to their own land through housing and their housing is innovative and responsive to the impacts and effects of climate change.</p>
5.	Outline of steps taken to implement the Policy / Programme	<p>An Implementation Plan is being co-designed by Māori and Crown Collectives.</p> <p>This Implementation Plan will provide greater detail about how the outcomes in MAIHI Ka Ora will be achieved, with work programmes, lead agencies, and measurable targets identified.</p> <p>The Implementation Plan covers a three – four year period. The draft Implementation Plan will go to Cabinet for approval in early 2022.</p>

6.	Outline of monitoring and evaluation built in to Policy / Programme	There are multiple work programmes identified in MAIHI Ka Ora across the 6 priorities. Once the Implementation Plan is agreed by Cabinet, HUD will develop an oversight mechanism to allow tracking and reporting on the work streams in the Implementation Plan. As part of this oversight mechanism HUD will request information about monitoring and evaluation from each lead agency, and publish consolidated information showing progress against the Implementation Plan, including information on monitoring and evaluation.
7.	Availability of quantitative or qualitative data to demonstrate success or failures of the Policy / Programme to achieve its stated aims	As part of the implementation plan for MAIHI Ka Ora an evaluation and monitoring programme will be led by Te Matapihi and supported by government agencies to ensure the deliverables and outcomes of the strategy are met and satisfactory to both the Māori collective and the Crown. This will provide a transparent process and establishes a procedure to support direct reporting to the MAIHI Whare Wānanga.

ⁱ #D12, Evidential factsheets for Te Tuapapa Kura Kainga, He Whare Āhuru He Oranga Tangata - The Māori Housing Strategy at p. 3-4.